

# JEEP RENEGADE LIFT KIT



INSTALLATION MANUAL

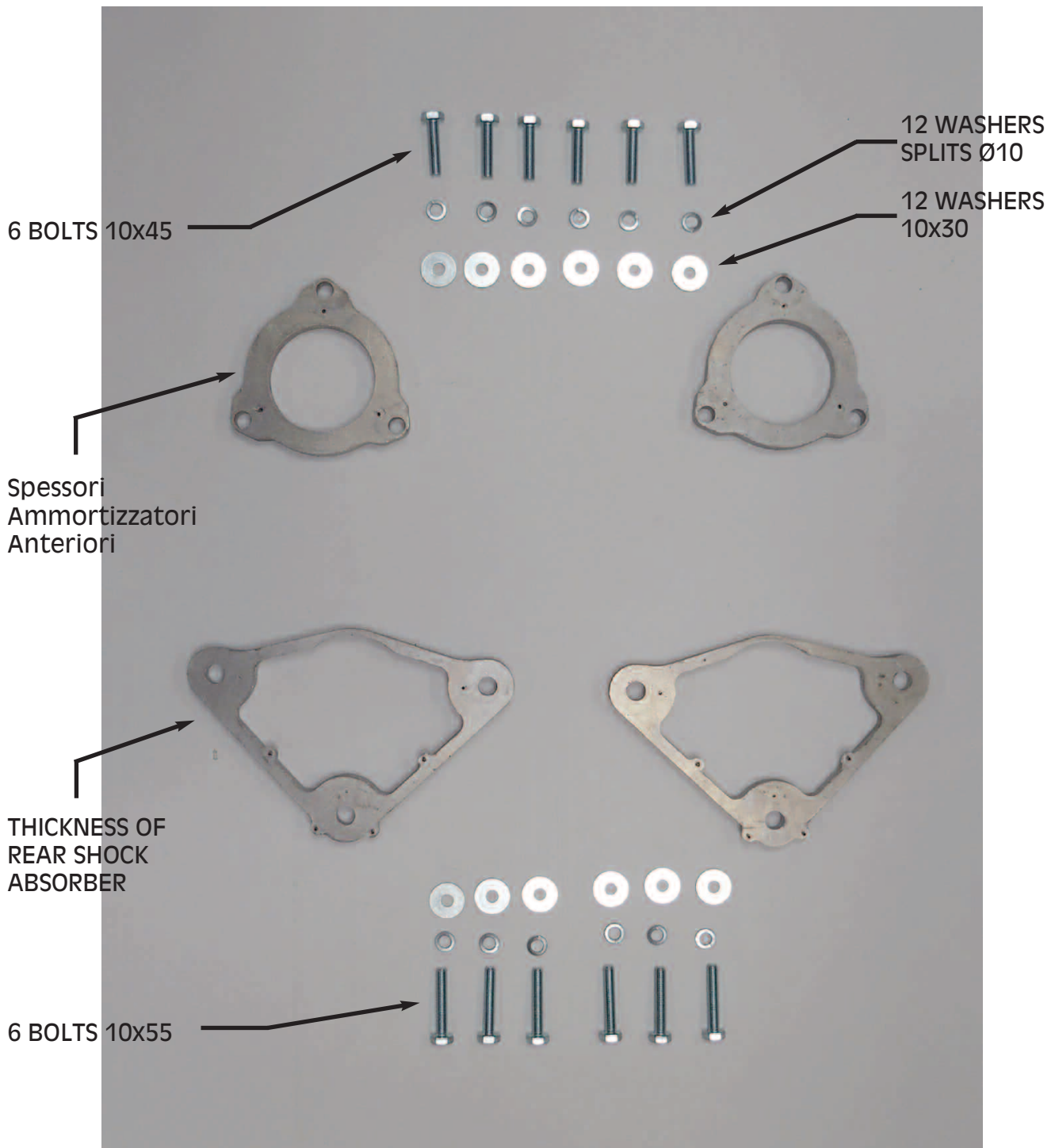


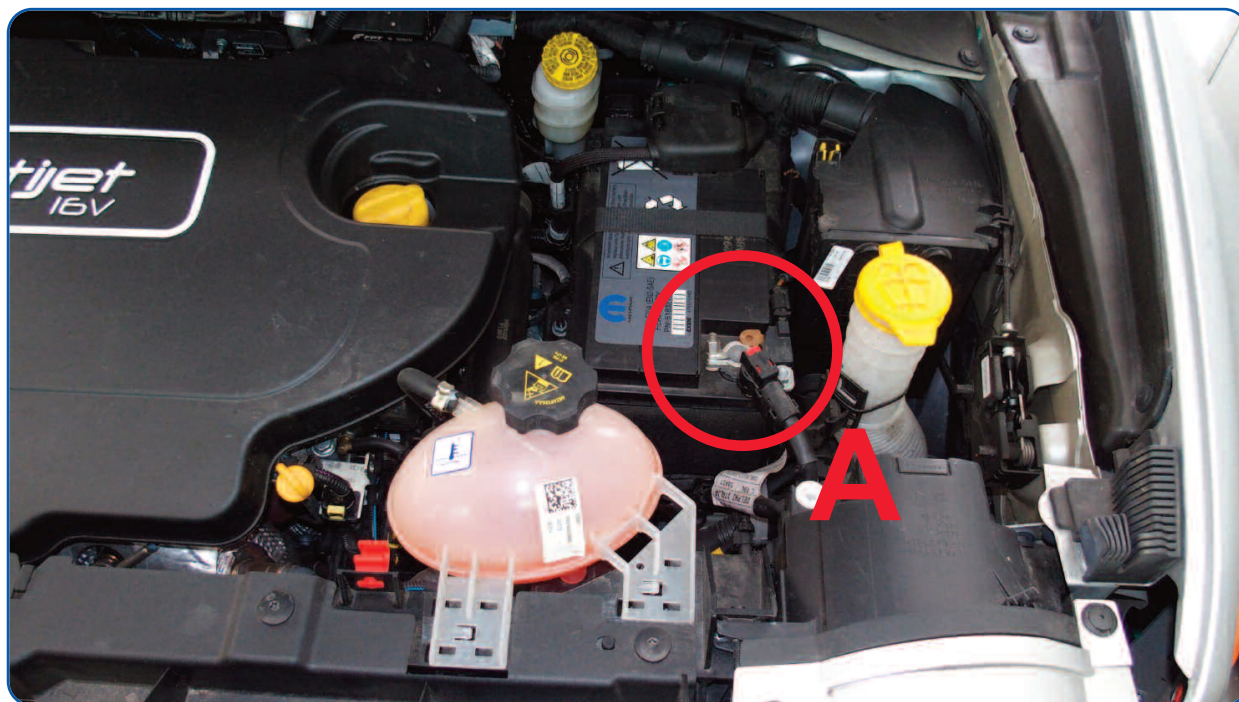
**THE USAGE OF ULTERIORE COMPONENTS ,OTHER THAN THOSE PARTS INCLUDED IN THE KIT AND/OR THE MODIFICATION OF THE PARTS PROVIDED IS NOT AUTHORISED BY GUIDOSIMPLEX.**



**WITH REGARDS TO THE DISMANTLEMENT/REMOVAL OF ANY ORIGINAL PARTS OF THE VEHICLE PLEASE REFER TO THE GUIDELINES PROVIDED BY THE CAR MANUFACTURE.**

# KIT LIFT





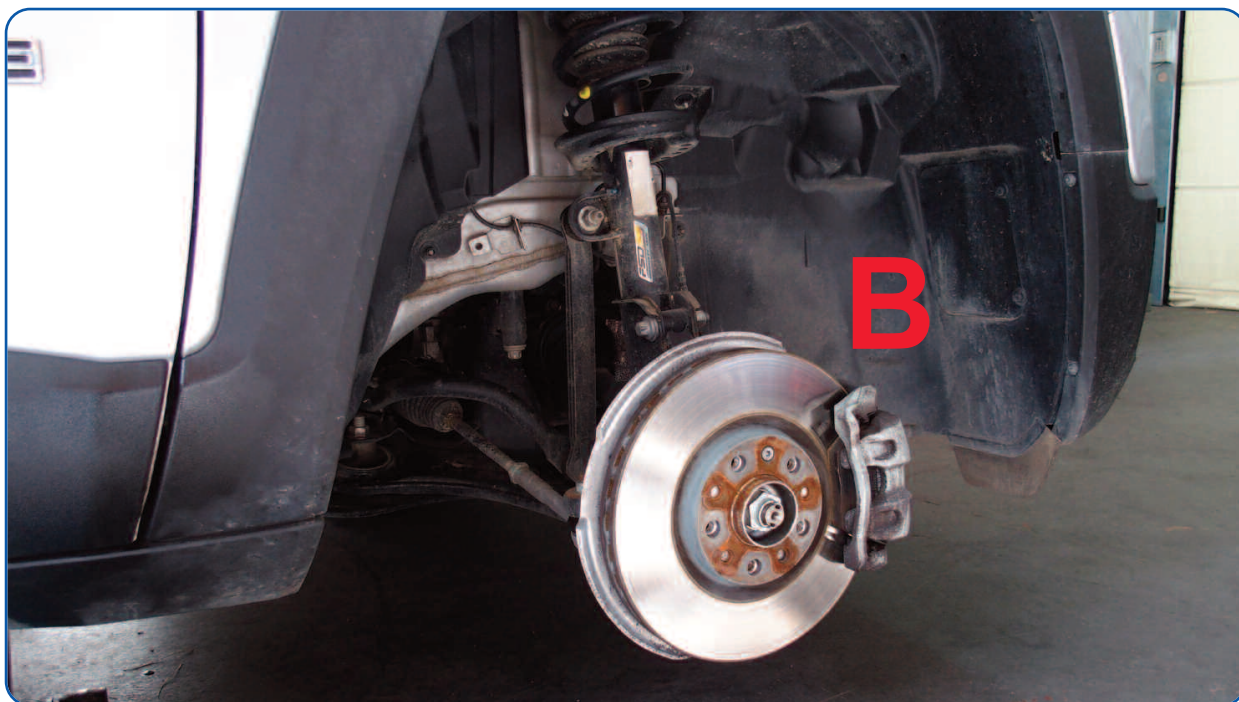
**A** - Remove the negative battery cable.



**FRONT**



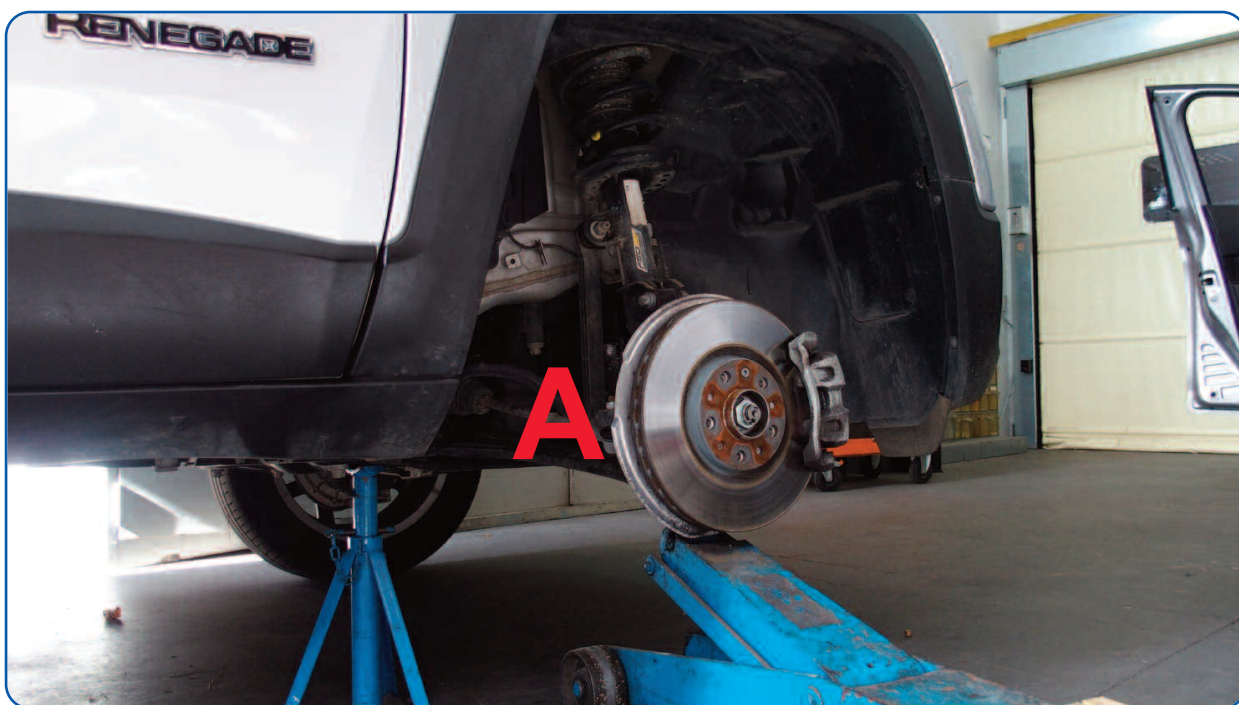
**A** - Raise the car (axle or crick) and remove 4 wheels

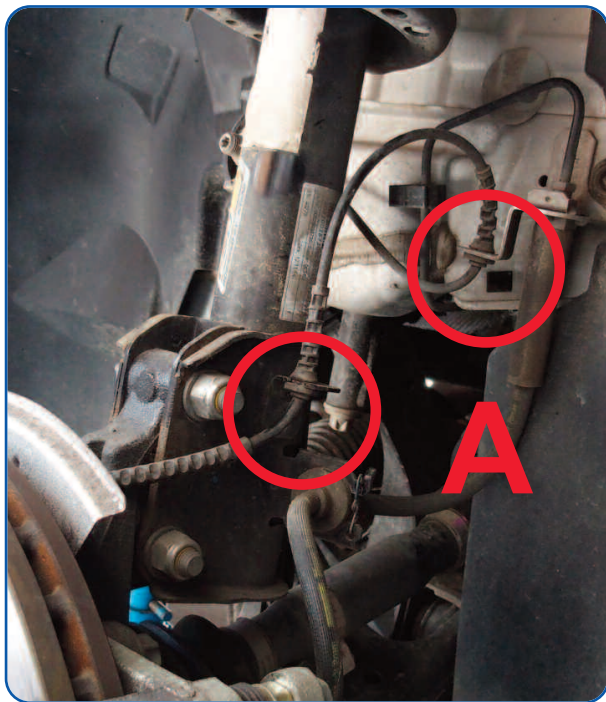


**B** - Warning: once raised keep in safety the car

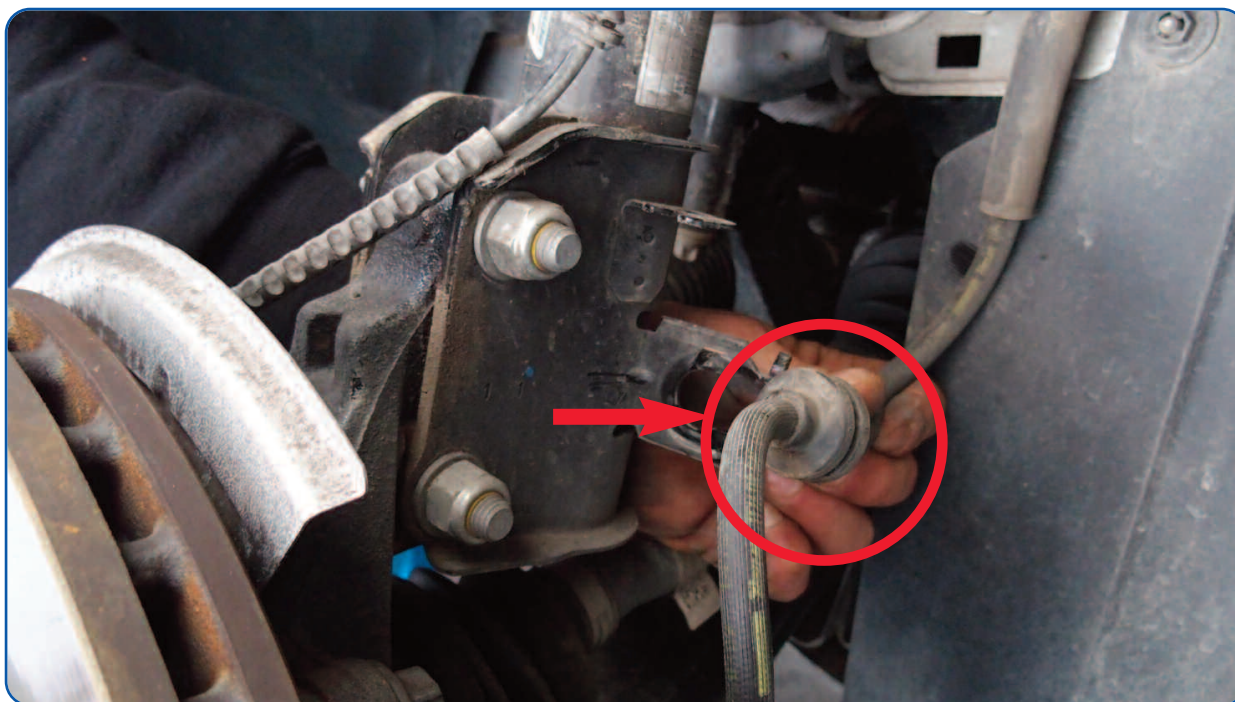


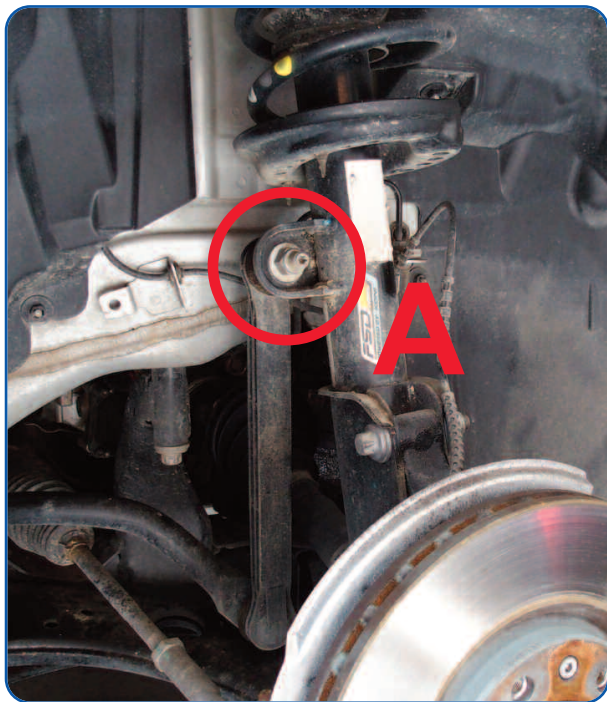
**A** - Place the crick under



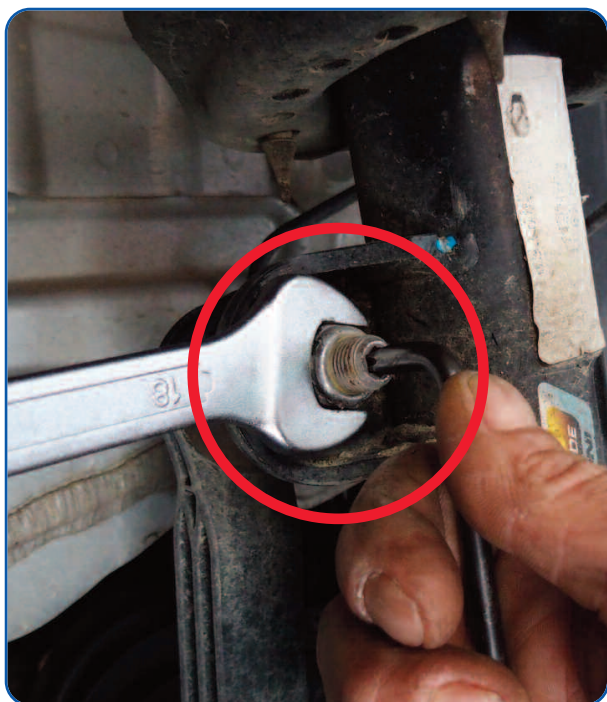
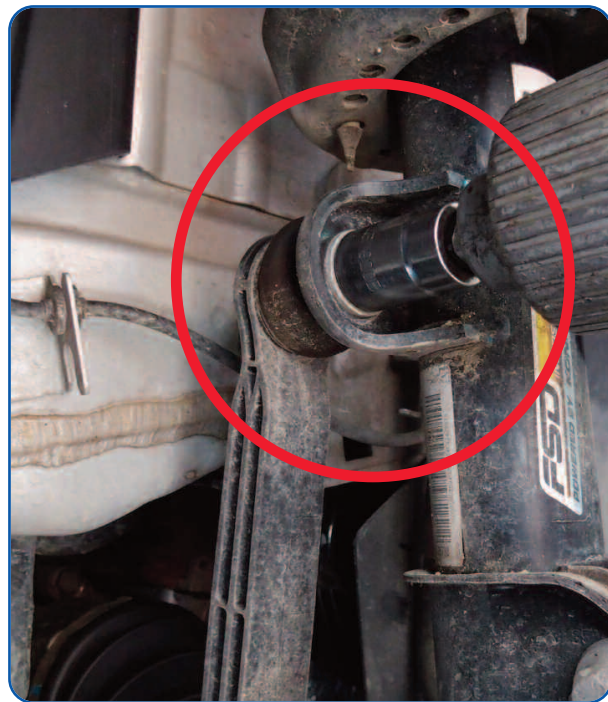


**A** - Unhook hydraulic hoses from their support

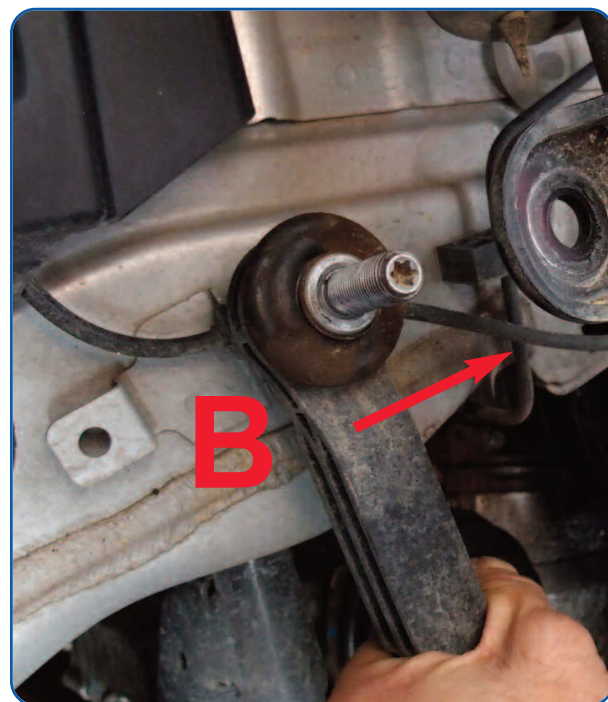




**A** - Unscrew the nut to remove the rod



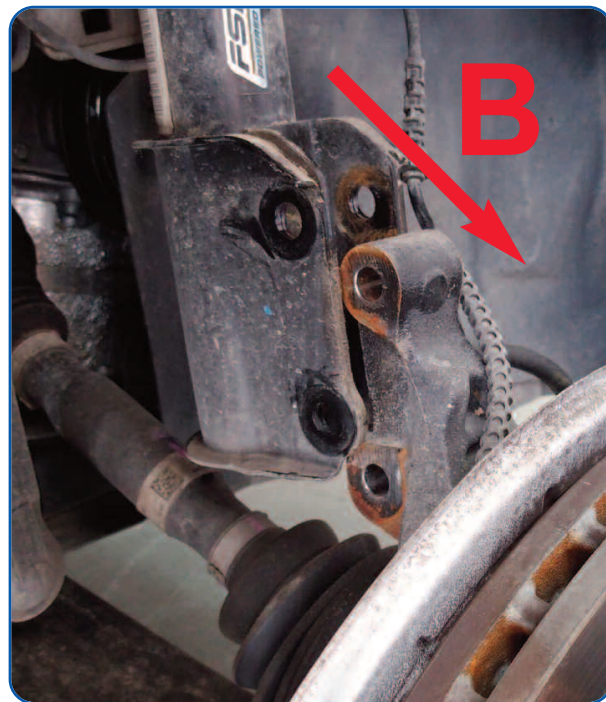
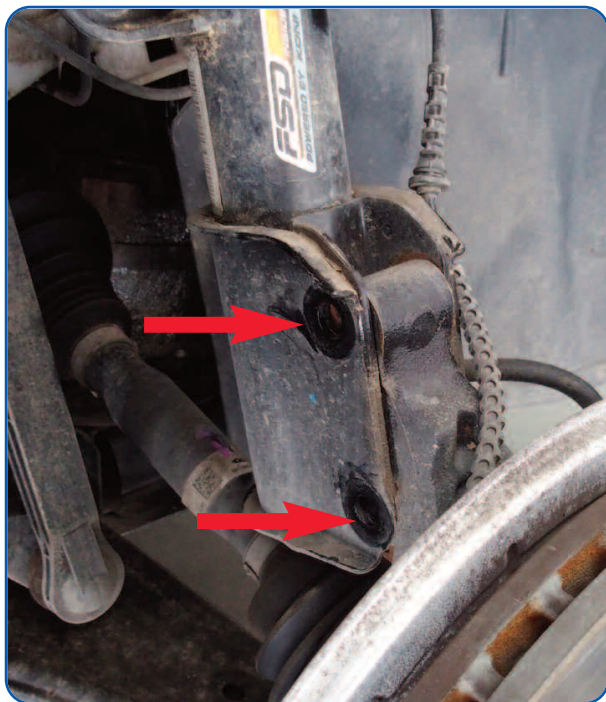
**B** - Pull out







**A** - Remove two bolts

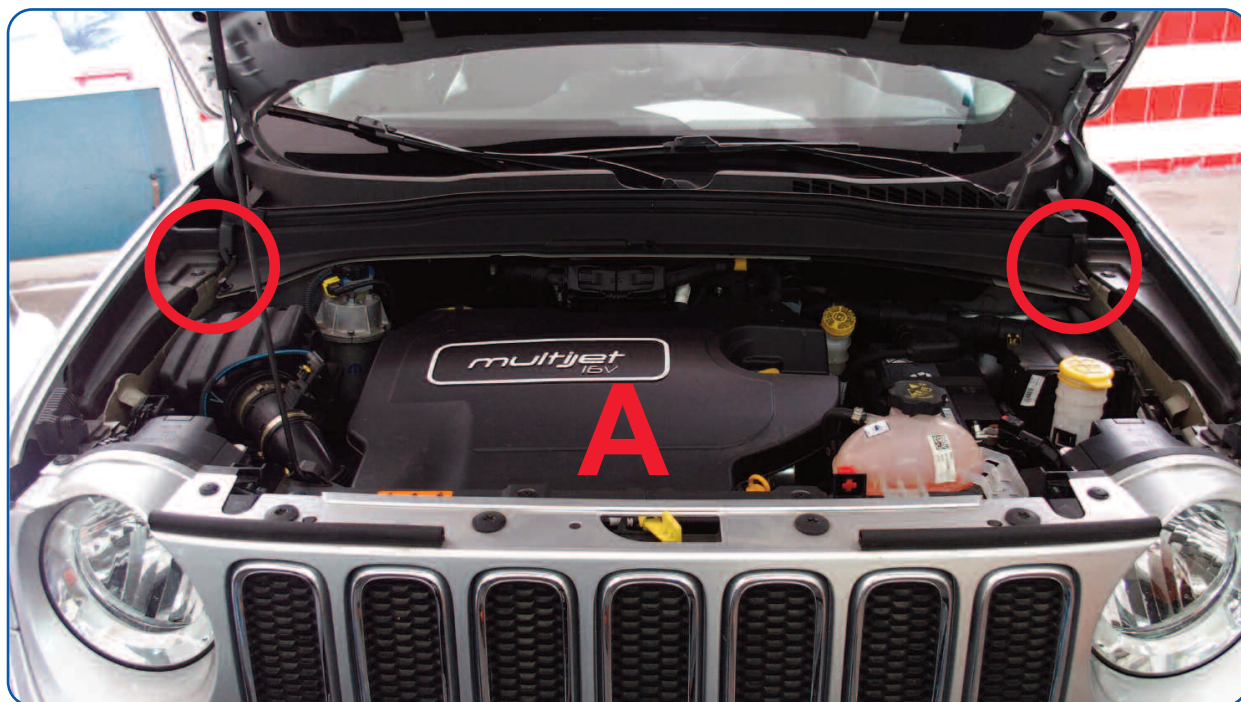


**B** - Pull out from the shock absorber

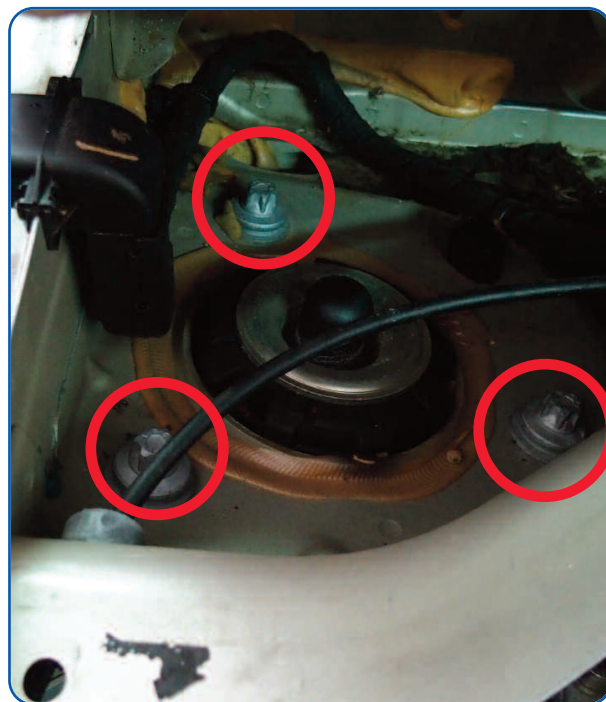


**A** - Remove two caps of the windshield wiper arm's , unscrew two nuts and remove the windshield wiper arm's.





**A** - Remove the bolts of the shock absorber



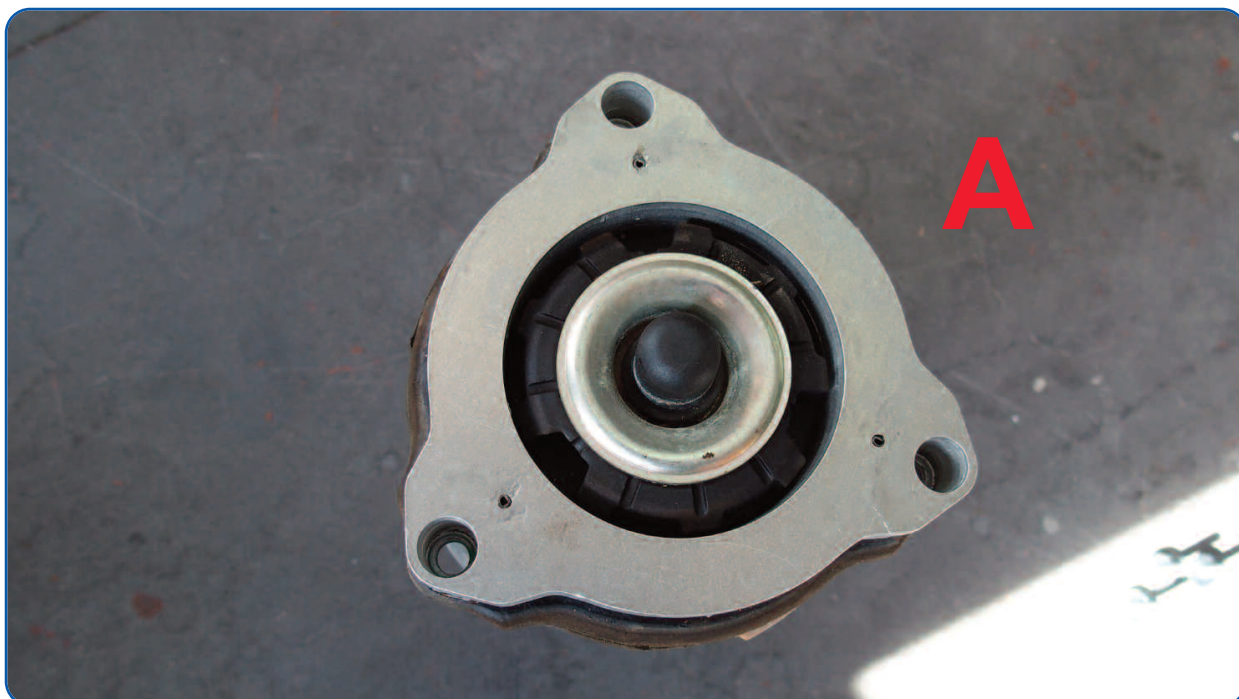


**A** - Pull out the shock absorber with its spring



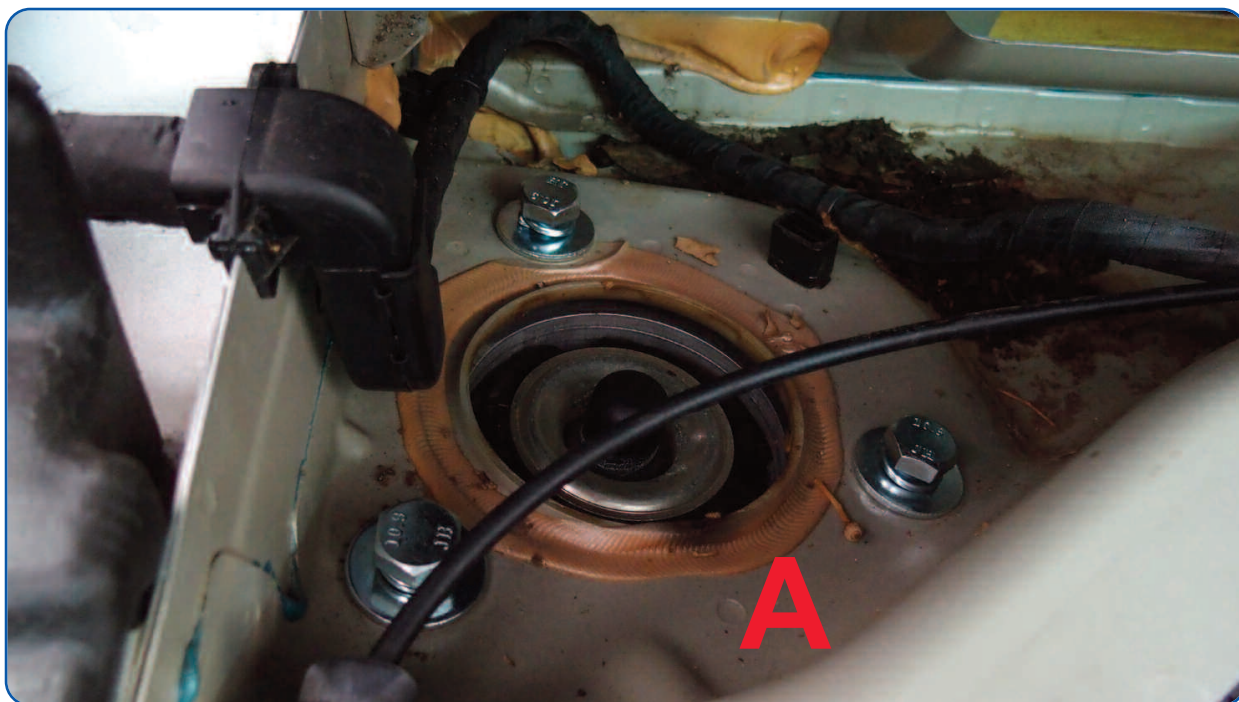


**A** - Place up to the spring's disk the shock absorber's thickness and let the three holes coincide

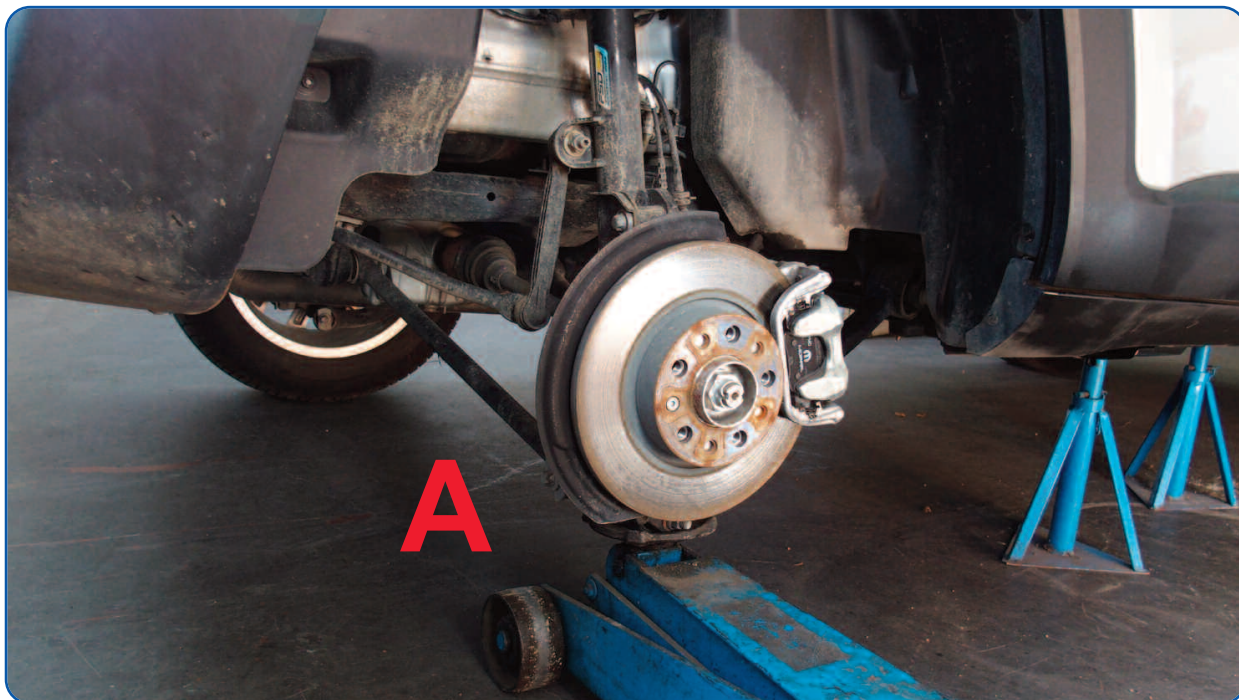




**A** - Reassemble fixing with the three bolts provided into the kit

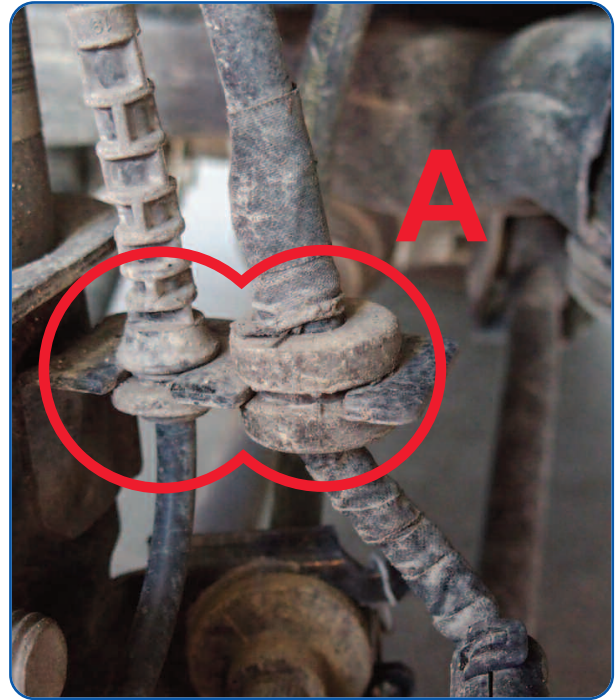


**REAR**



**A** - Place the crick under

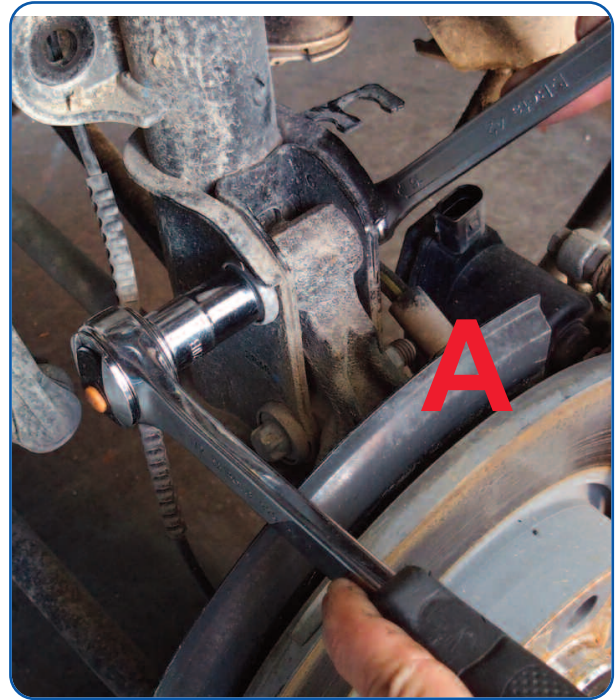




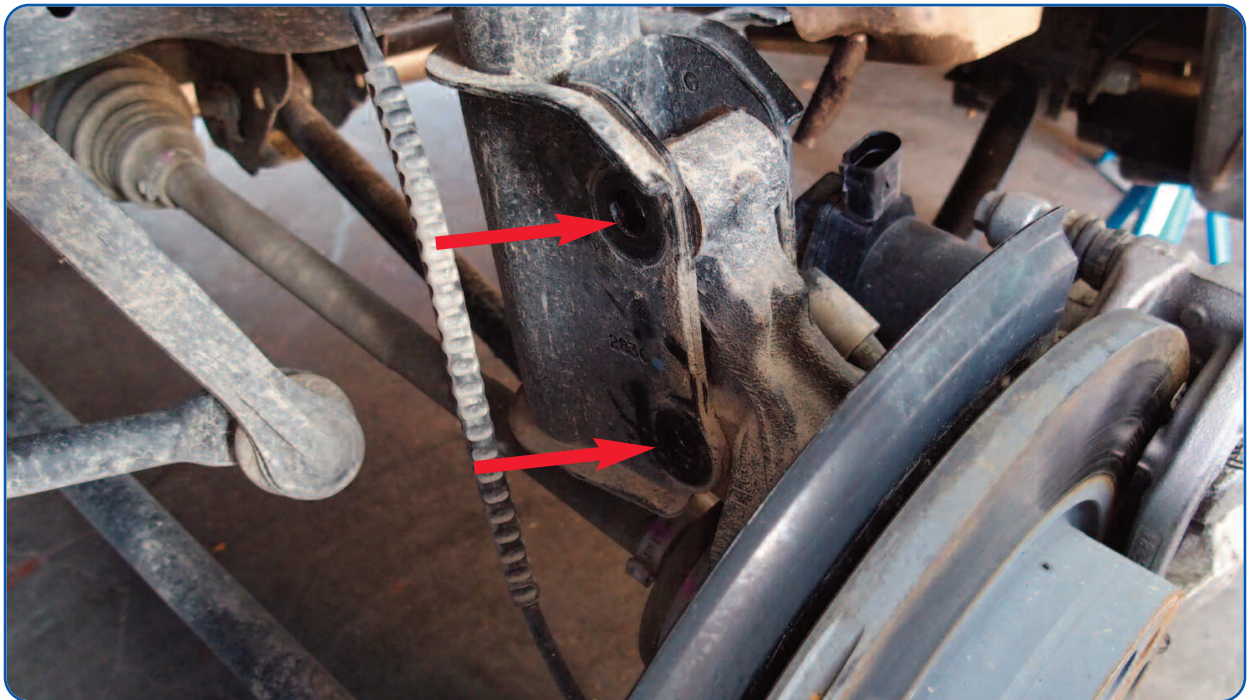
**A** - Unhook

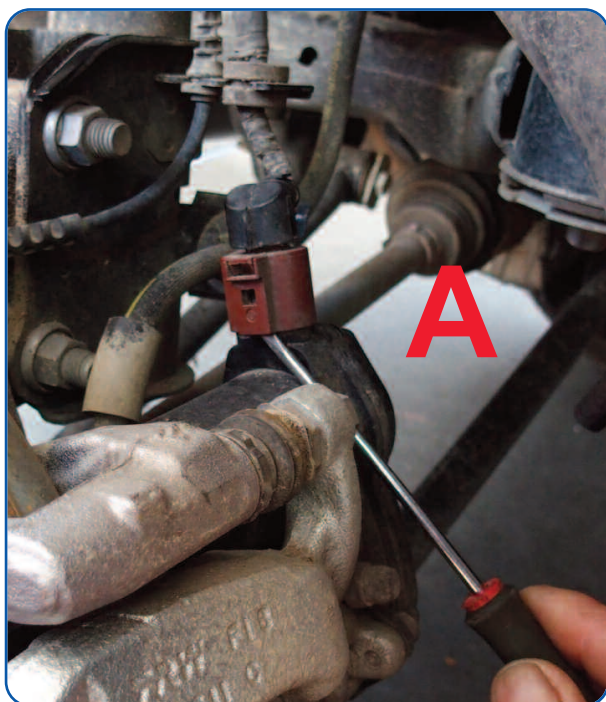






**A** - Unhook

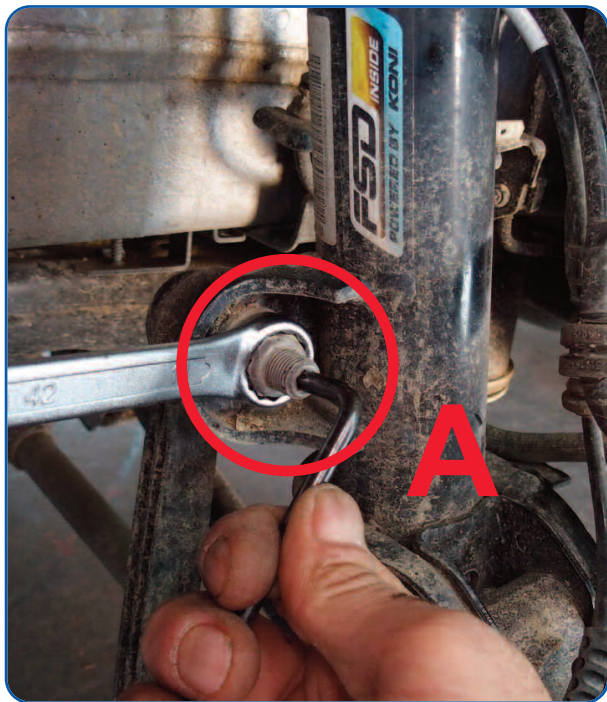




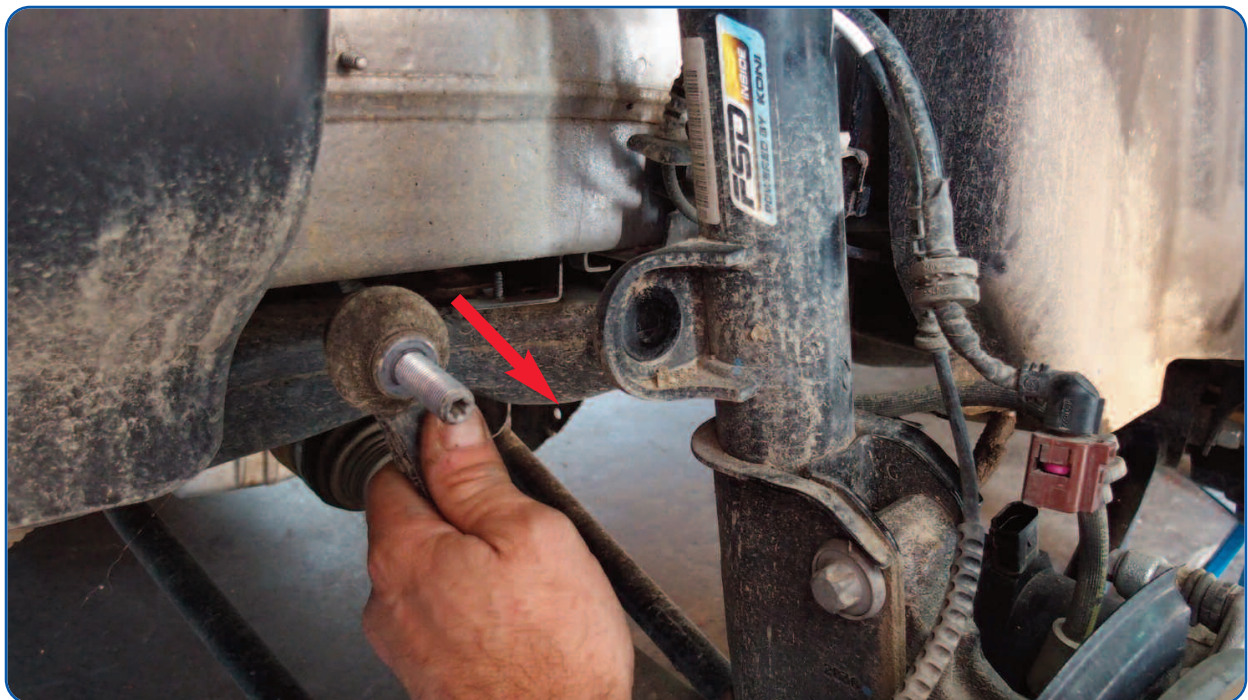
**A** - Unhook the connection

**B** - Unhook the clip and pull out





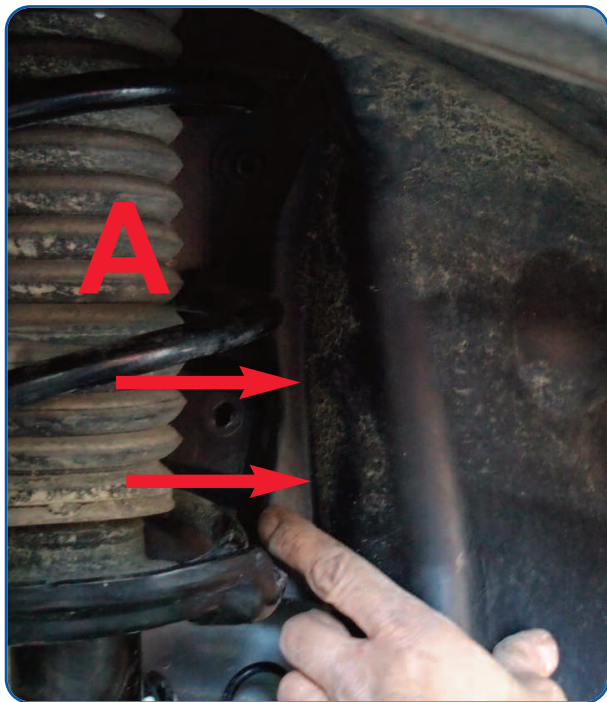
**A** - Unscrew the nut and pull out



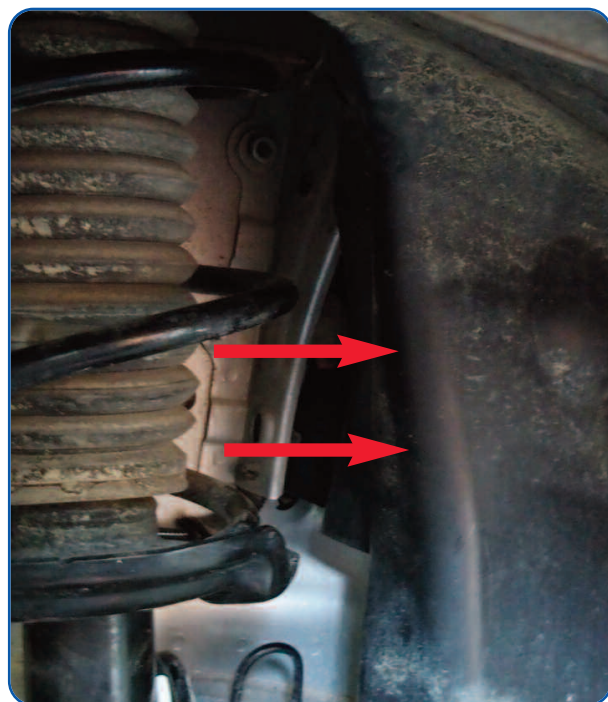


**A** - Unscrew the two nuts



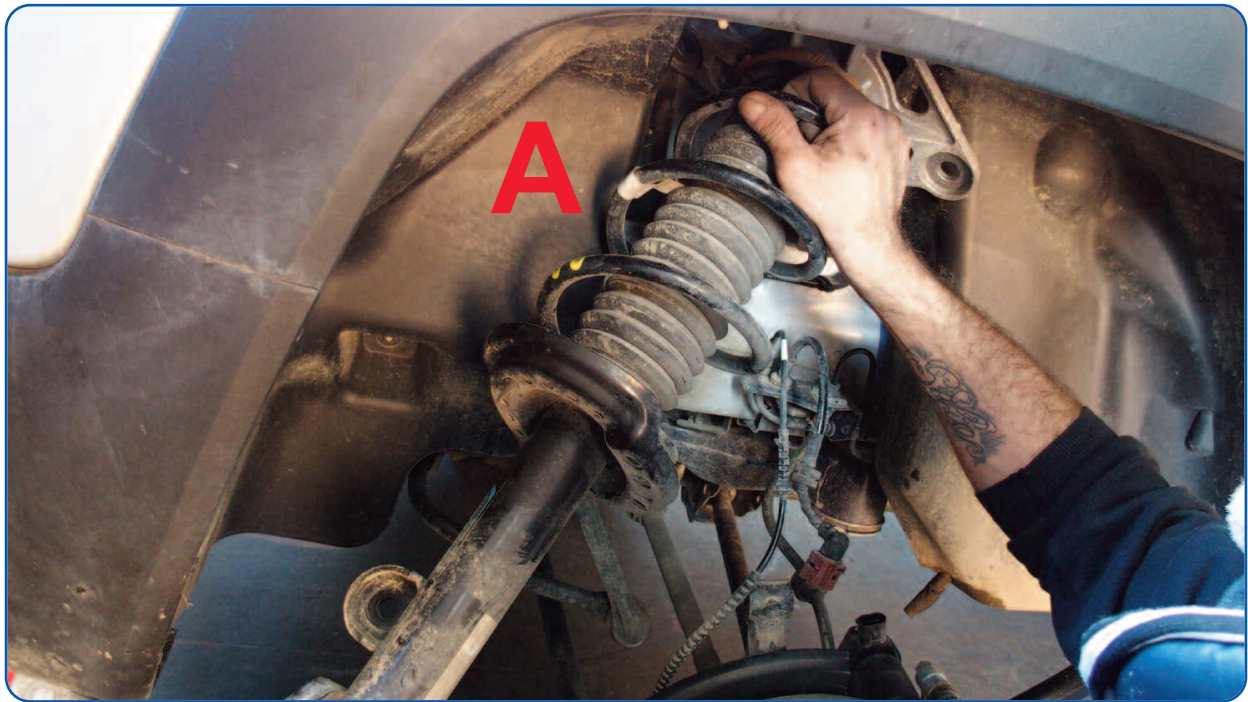


**A** - Bend the carter inwards, as shown, (both sides)



**B** - Unscrew three bolts



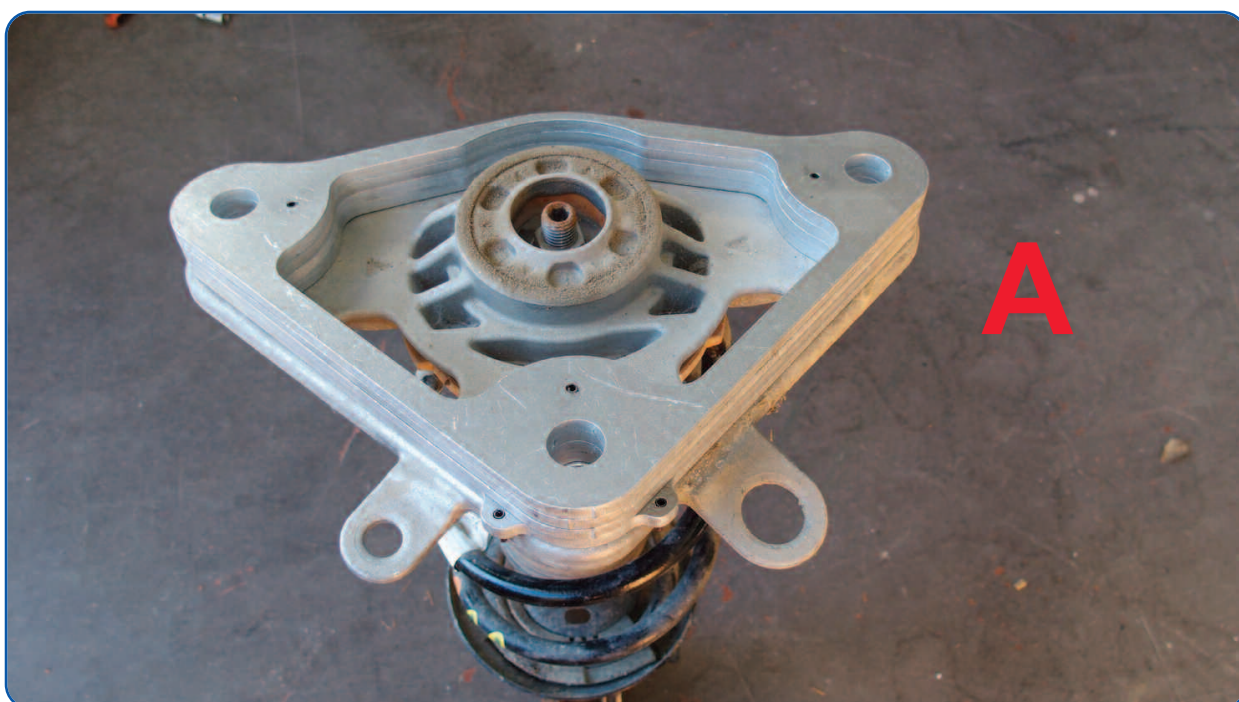


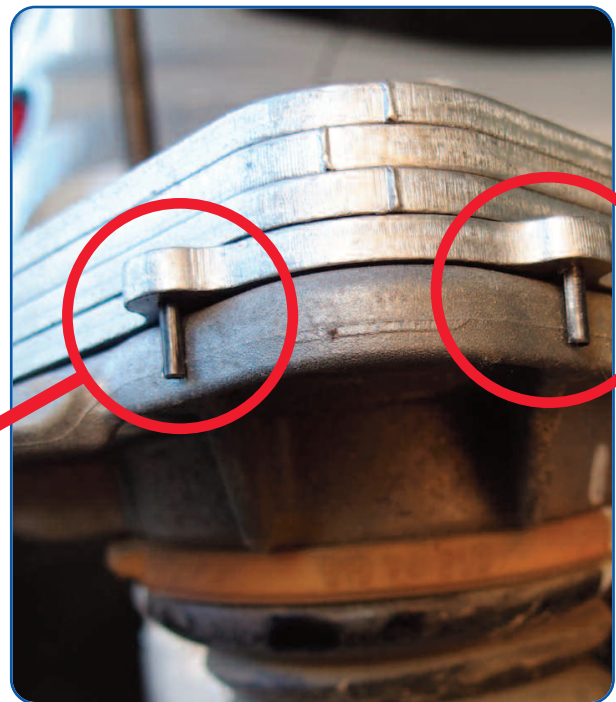
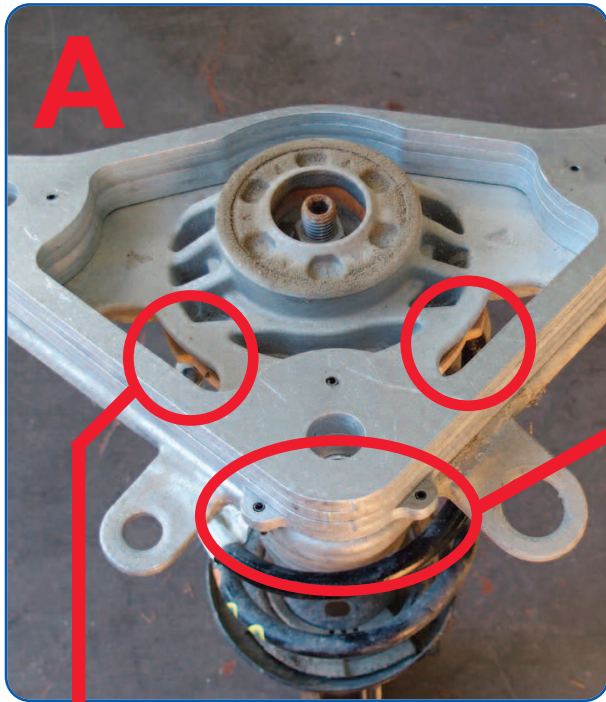
**A** - Pull out the shock absorber and the spring





**A** - Place the thickness of rear shock absorber provided into the kit

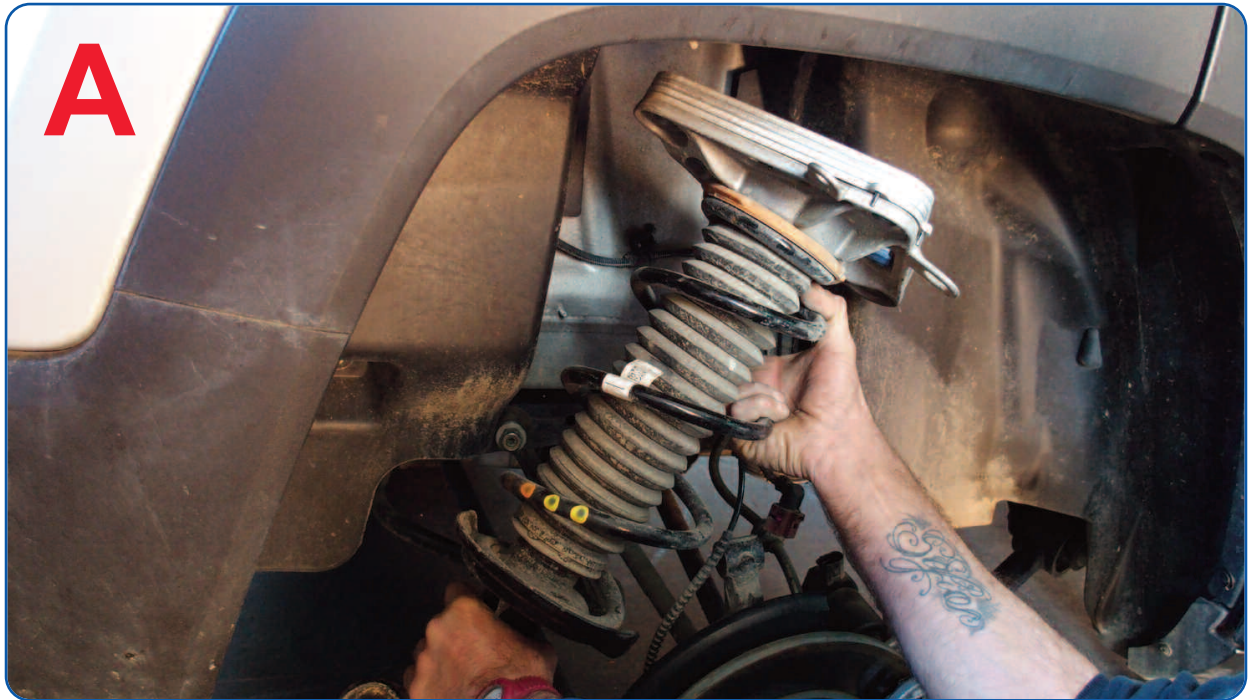




**A** - Place the thickness of rear shock absorber as shown







**A** - Place the thickness of rear shock absorber as shown

---

---

---

---

---

---

---

---

---

---

---

---

---

---

---

---

---

---

---

---

---

---

---

---

---

---

---

---

---

---



---

---

---

---

---

---

---

---

---

---

---

---

---

---

---

---

---

---

---

---

---

---

---

---





Via del Podere S.Giusto, 1  
00166 Roma (Italy)  
TEL. +39 06 61 52 80 90  
FAX +39 06 61 52 80 36  
[rocks@rocks-4x4.it](mailto:rocks@rocks-4x4.it)